

TYRE PRESSURE RECEIVER

SECU VARIANT



The tyre pressure receiver unit is for use with MESL tyre pressure sensors. The sensors transmit pressure, temperature, battery voltage, serial number and life count data over an RF link to an antenna on the car. Signals from the antenna are passed to the tyre pressure receiver unit where they are decoded and sent to the ECU via CAN to be further processed and scaled.

This variant is for use with the FIA single ECU. The calibration data for the sensors will be stored in the ECU allowing the package of the receiver to be greatly reduced.

Electrical

- Supply voltage 8 to 16Vdc
- Supply current 35mA max @12V
- CAN bus 2.0B active, 1Mbps

Mechanical

- Weight less than 60g (without antenna)
- Aluminium alloy housing, hard anodised and dyed black

Environmental

- Resistant to standard motorsport fluids
- Operating temperature +10 to +85°C
- Maximum humidity 100%
- Vibration random spectrum for two hours in connector axis

Application

- Tyre pressure measurement in conjunction with the Microsoft-MES SECU.

Connection Definition

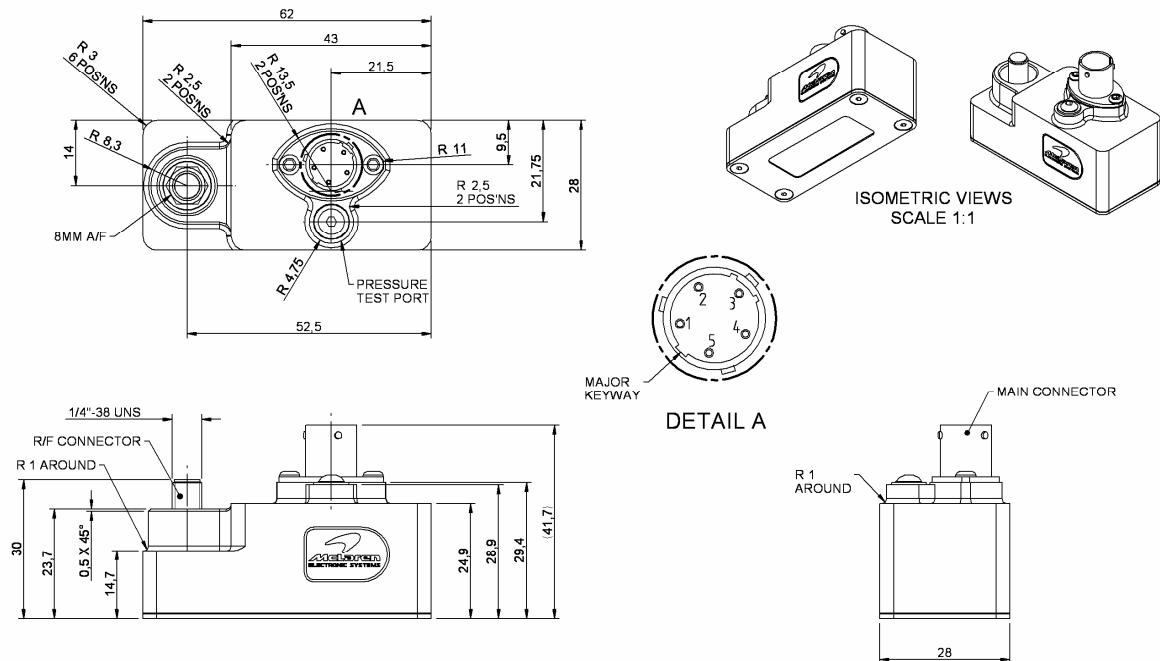
- Connector ASL2-06-05PN-HE

Pin 1	Supply
Pin 2	Ground
Pin 3	CAN +
Pin 4	CAN -
Pin 5	N/C
- Antenna connector SMA socket

Case	RF ground
Centre	RF in

18/09/08

TYRE PRESSURE RECEIVER SECU VARIANT



Description	Order Code
Tyre Pressure Receiver SECU Variant	O 030 330 046 033

18/09/08